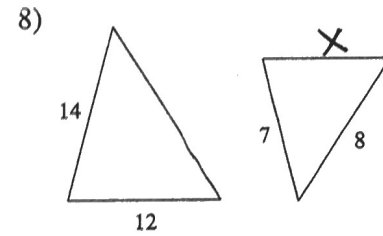
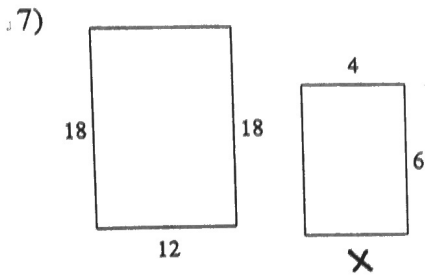
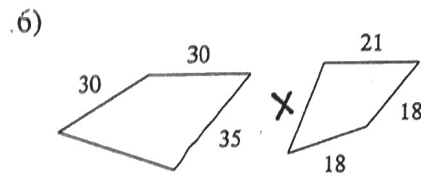
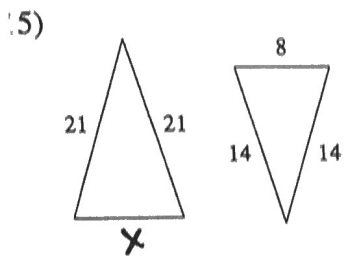
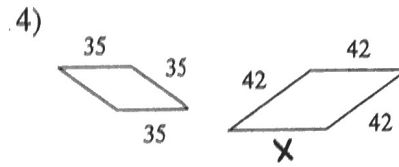
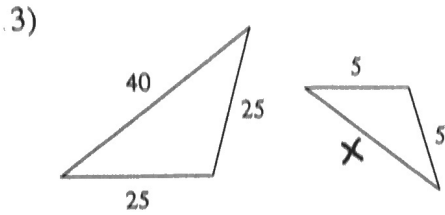
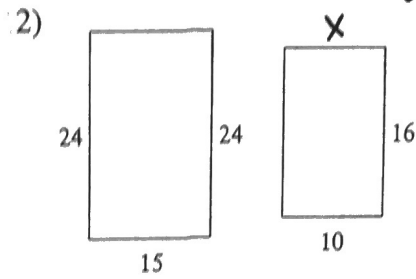
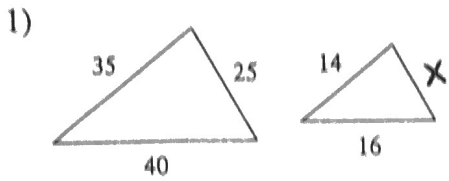


The polygons in each pair are similar. Find the scale factor of the pre-image to the image and solve for x .



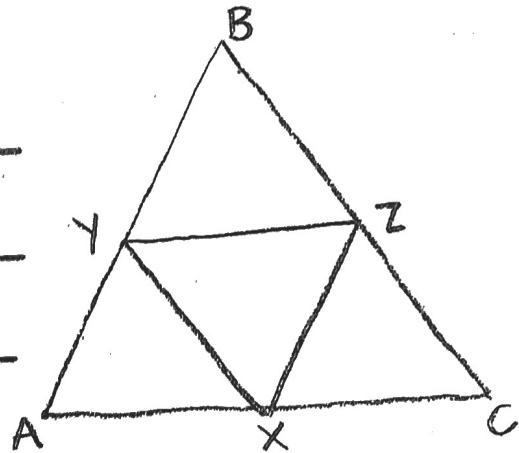
Use $\triangle ABC$, where X , Y , and Z are midpoints of the sides.

⑩ $AC \parallel$ _____

⑪ If $\overline{AC} = 35$, then $\overline{YZ} =$ _____

⑫ If $\overline{XY} = 6$, then $\overline{BC} =$ _____

⑬ If $\overline{AY} = 5$, then $\overline{AB} =$ _____



⑭ If $\overline{XY} = 4x + 7$ and $\overline{BC} = x + 35$, then $\overline{BC} =$ _____.